

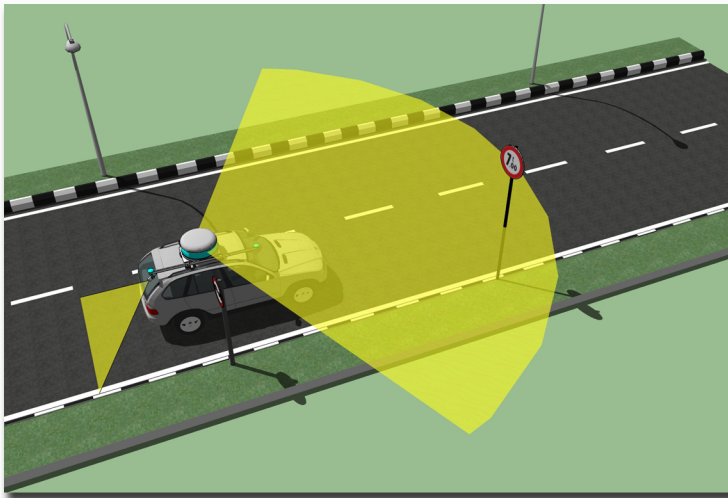
Surveys

SITALIA proposes surveying services of road infrastructure with the aid of practical and high precision solutions:

- **BOX VIDEO:** instrument for capturing georeferenced images which is equipped with 4 HD cameras and integrated dual frequency GPS
- **MINI BOX:** instrument equipped with an HD camera and integrated dual-frequency GPS for speed survey of roads, particularly suitable for surveys in harsh environments

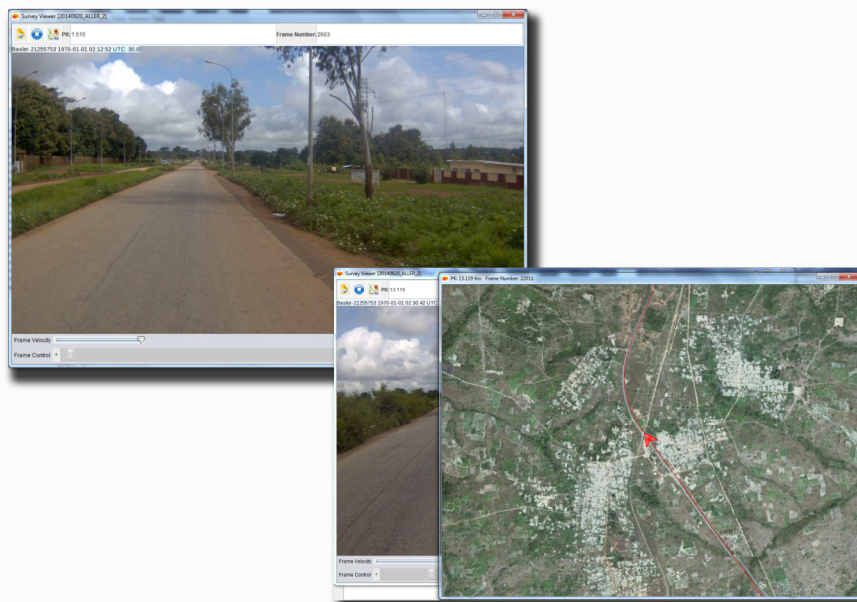
The image capture systems (Box-Video and Mini-Box) are synchronized with the navigation system, so it is possible to know for each frame the position and the trim of the camera at the time of shooting.

In particular the Box-Video, using also the two cameras on the side allows having, together with the front camera, a wider overview of the shooting area permitting an evaluation of the actual state of filmed objects. The camera on the back of the vehicle is directed to film in particular the road surface.



Data collected using Box-Video and Mini-Box can be viewed quickly with Survey Viewer or they can be processed, implemented and managed through the software PKmaps V3

- **SURVEY VIEWER:** developed in Java, it allows to display all used cameras and to load an orthophoto as reference mapping, viewing in a separate window the position of the camera moment by moment.



- **PKmaps V3:** the visualization of the georeferenced frames on PKmaps V3 allows the implementation of the data base. Thanks to the survey and the subsequent data post-processing phase, we can localize and enter in PKmaps V3 all the information regarding all the detected objects, obtaining as final result a survey of the actual state of the road infrastructure.

