

Topography

Thanks to its topographic instruments SITALIA is highly specialized in providing the necessary technical assistance to the various design phases of road infrastructure projects; from the supply of LIDAR cartography for preliminary and final design, to the detailed topographic surveys for executive and construction design, to the topographical support on site during the various construction stages.

SERVICES

- Coordination of topographic projects
- Definition of survey methods
- Positioning of support polygonal
- Precision levelling
- Detailed and high precision planimetric and altimetric survey
- Calculation and preparation of topographic dossier

INSTRUMENTS AND SOFTWARE

GPS LEICA GX 1230 BASE + ROVER

Leica 1230 GG GPS of Sitalia is used with the connection via GNSS instrumentation (Siemens MC45 GSM modem) to the ItalPos network that allows real time correction of the collected data. These data are also recorded on an external support for the subsequent post-processing phase.

Smart-Antenna LEICA GG02plus

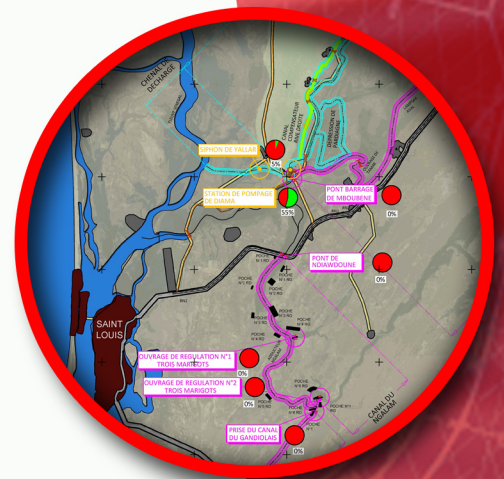
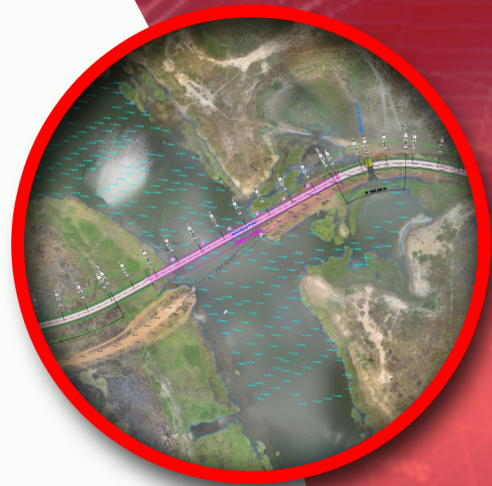
This instrument of Sitalia is used for expeditious topographic surveys, it is useful for preliminary site inspections but also, thanks to the connection to the ItalPos network, for detailed topographic surveys. It therefore proves to be a versatile device that is suitable for any kind of environmental situation. Data management is done through Zeno Connect tool, which allows to receive data sent via bluetooth from the GG02 plus antenna and to receive at the same time the correction from the Internet

Leica Geo Office v. 8.3

Leica Geo Office v. 8.3 software is used for the post-processing of topographic surveys, allowing to achieve optimal results even in prohibitive survey conditions.

Leica Zeno Connect

Leica Zeno Connect software allows to receive information from the LEICA GG02plus Smart-Antenna, from the ItalPos network, providing a corrected GPS position in real time. This information is made available also on other software such as PKMAPS V3 for the geolocation of elements to be surveyed.



SITALIA s.n.c.

Via Celante, 38 - 33091

Castelnovo del Friuli (PN)

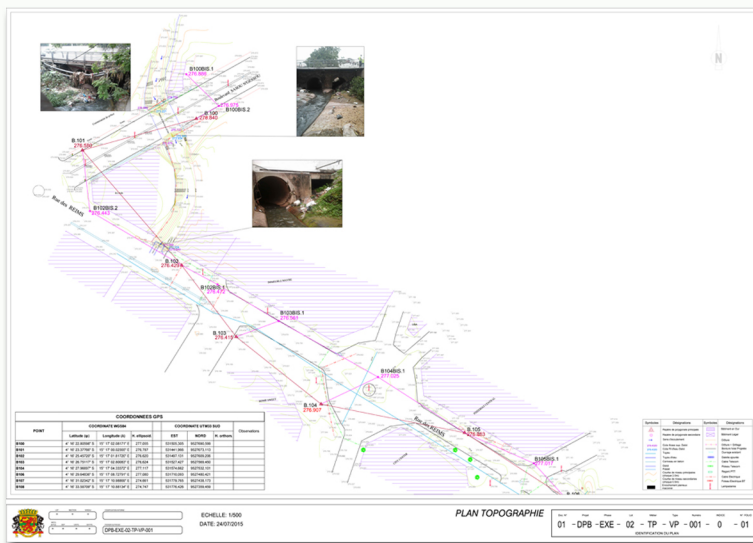
Tel. +39 0427 92 6005

e.mail sitalia@sitalia.it - www.sitalia.it

SOME REALIZED PROJECTS

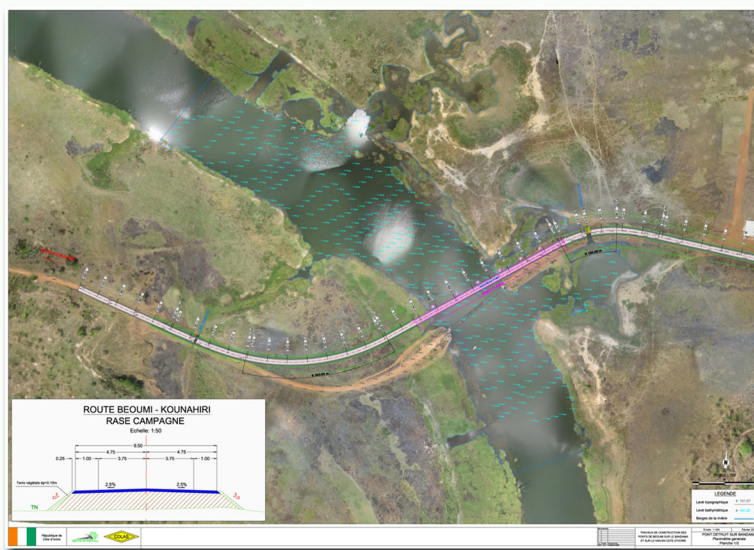
2015 - CONGO

Realization of topographic works on 18 hectares in total for the rehabilitation of rainwater drainage infrastructures in Brazzaville, on behalf of EIFFAGE TP.



2014 - IVORY COAST

Topographic surveys aerial photogrammetry (with the use of a drone), bathymetric and currentmetric surveys on the river Bandama between Beoumi and Kounahiri, in Ivory Coast for the realization of the restoring project of the bridge over the river.



2013 - BENIN

Realization of topographic and bathymetric works on 8 sites for the navigability study of inland waters in Benin.

2013 TOGO

Coordination of topographic works, GPS polygonal surveys and geometric executive design of Lot No. 1 (Civil Engineering and Technological Networks) for the extension project of the earthworks of the container terminal at the port of Lomé in Togo, on behalf of Eiffage Travaux Publics.